

# The Wynwood I-B



Elevation #1\*



Elevation #2\*



Elevation #3\*

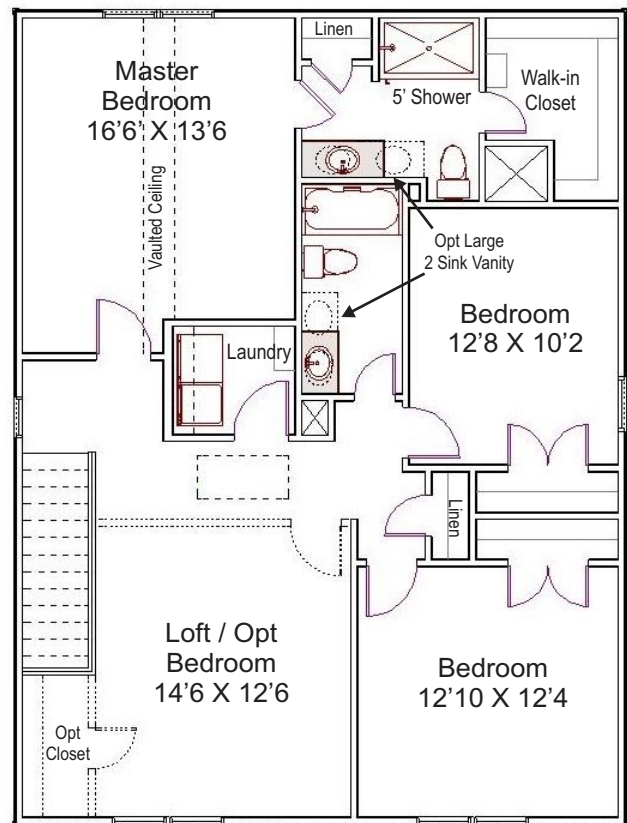
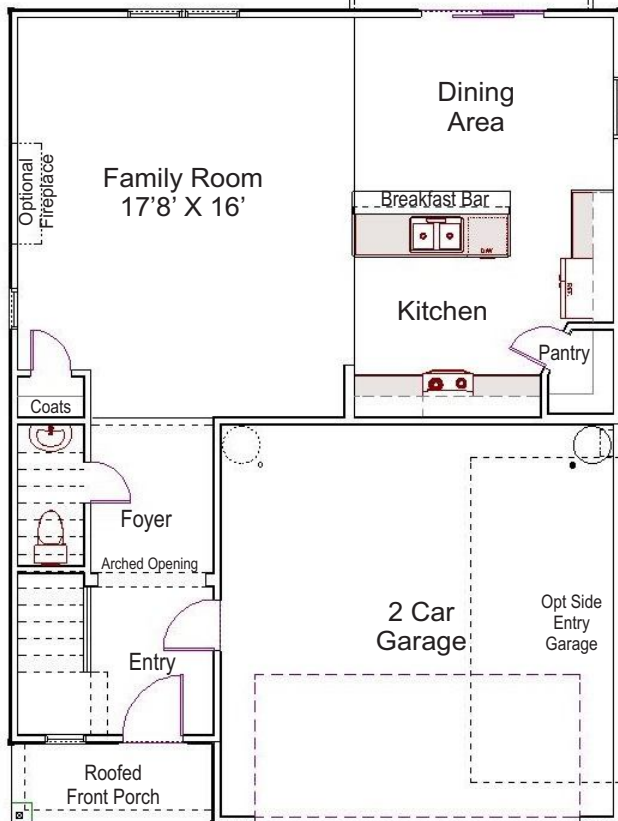


Elevation #4\*

**1,971 Sq Ft Living Area**  
**3 Bedrooms + Loft**  
**Opt 4th BR**  
**2-1/2 Baths**

Optional Roofed  
Rear Porch

\*Some elevations shown with optional  
upgraded stone, front porch railing,  
front door window, & garage  
door hardware & windows.



SouthCraft Builders, Inc reserves the right to make material substitutions as required, with materials of equal or greater value without notice. All dimensions are approximate. Terms & conditions may vary per loan program. Information believed accurate, but not warranted, subject to change without notice.